



addition



addition (stairwell interior)



existing building



steel framing

RANDOLPH MIDDLE SCHOOL

Charlotte-Mecklenburg Schools
Charlotte, NC

Prior to renovation, Randolph Middle School was undersized and housed 800 students, approximately 100 of which were exceptional or physically challenged. The original 1966 building was designed with stepped floor elevations, which took advantage of the sloping site, and a two-story section at the west end. Most of the floor levels were only accessible with the use of a chair lift, which created significant problems for the E.C. student population.

The goals of the project were to bring the school up to the current CMS baseline standard where feasible, increasing the capacity from 800 to approximately 1200 students. A modular classroom addition was constructed, connecting to the existing building. Another addition occurred adjacent to the two-story section, containing a glass-enclosed monumental stair and elevator lobby, providing accessibility to the existing gymnasium on the lower level, as well as additional kitchen space and new toilets. Much of the remainder of the school was renovated to provide new areas for administration, media center, kitchen, cafeteria, classrooms, and accessible toilets. In addition, all of the chair lifts and corridor stairs were eliminated and replaced with accessible ramps the full width of the corridors to provide an equitable means of circulation.

Summary:

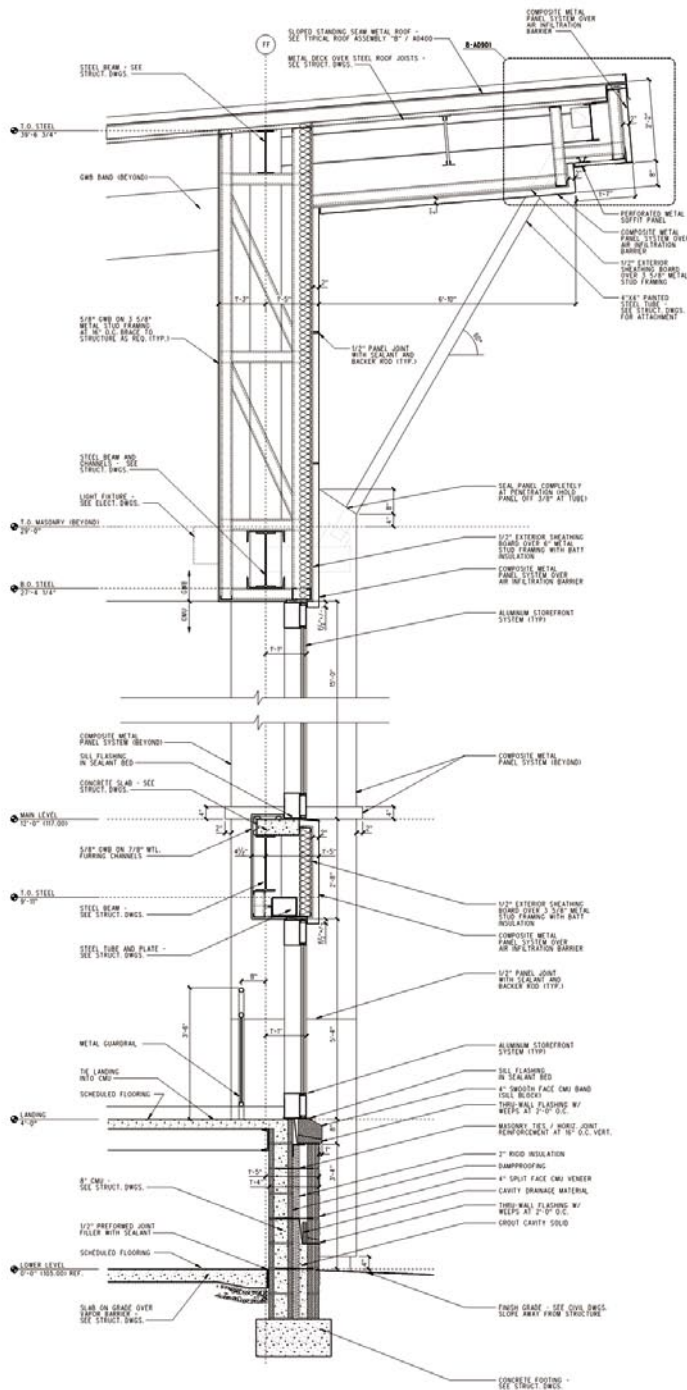
- Construct new addition for stair and elevator lobby
- Provide modular classroom building
- Reuse existing gymnasium
- Renovate existing building, including a relocated/enlarged media center, music rooms, administration, kitchen, and classrooms.
- Expand the cafeteria into adjacent space.
- Replace chair lifts and corridor stairs with accessible ramps.

118,000 SF (renovation)
7,000 SF (addition)
\$11.8 M

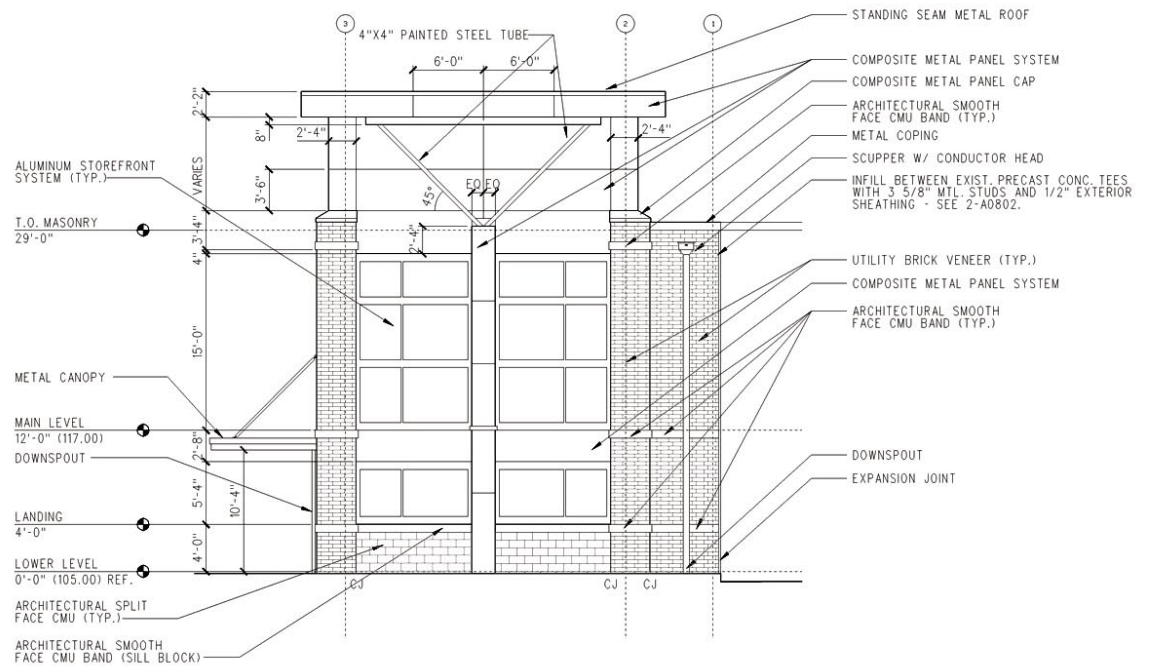
August 2008
The FWA Group



[22] main level plan



[24] wall section



south elevation

building section

BUILDING SECTION

Annotations and Callouts:

- STANDING SEAM METAL ROOF
- ALIGN CENTERLINE OF PANEL JOINT WITH CENTERLINE OF MULLION - TYP.
- COMPOSITE METAL PANEL SYSTEM
- ARCHITECTURAL SMOOTH FACE CMU ACCENT (TYP.) - RECESS 3/4" FROM BRICK FACE
- 4"x4" PAINTED STEEL TUBE
- WRAP METAL PANEL AROUND CORNER TO NEXT PANEL JOINT (TYP.)
- COMPOSITE METAL PANEL CAP (TYP.)
- METAL COPING
- ARCHITECTURAL SMOOTH FACE CMU BAND (TYP.)
- UTILITY BRICK VENEER (TYP.)
- SCUPPER W/ CONDUCTOR HEAD
- T.O. MASONRY 29'-0"
- MAIN LEVEL 12'-0" (117.00)
- LOWER LEVEL 0'-0" (105.00) REF.
- ARCHITECTURAL SPLIT FACE CMU (TYP.)
- DOWNSPOUT
- ALUMINUM STOREFRONT DOOR - SEE SCHED.
- ALUMINUM STOREFRONT SYSTEM (TYP.)
- ARCHITECTURAL SMOOTH FACE CMU BAND (SILL BLOCK)
- ARCHITECTURAL SPLIT FACE CMU (TYP.)
- EXISTING BUILDING BEYOND (GYMNASIUM)
- BRICK PIER - SEE 4-A0500 FOR BANDING (TYP.)
- LANDING 4'-0"

Dimensions and Notes:

- 15'-4"
- 2'-0"
- 5'-4"
- 16"
- 5'-4"
- 4'-0"
- 2'-8"
- 4'-0"
- 4'-0"
- 4'-0"
- 10'-4"
- 2'-8"
- 5'-4"
- 4'-0"
- VARIES
- 3'-6"
- EQ (TYP.)
- EQ (TYP.)
- EQ
- EQ
- 1
- 12