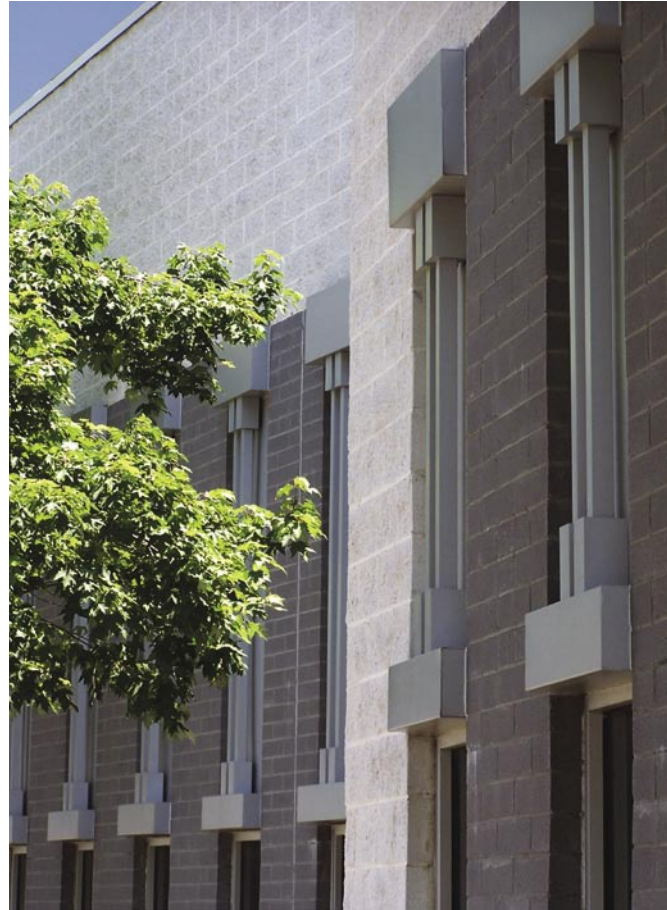
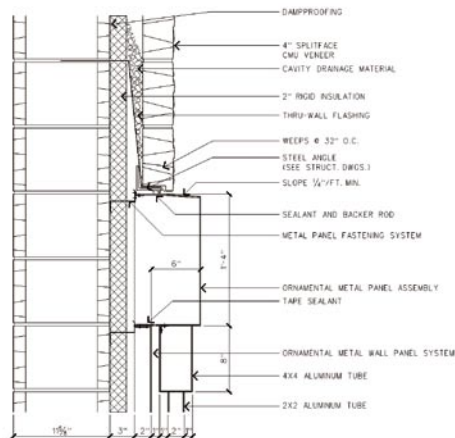




view from Poplar St. (addition)



metal panel detail



head detail at metal panel



view from Stonewall St. (screen wall)

CHARLOTTE OBSERVER ADDITION AND RENOVATION

Charlotte, NC

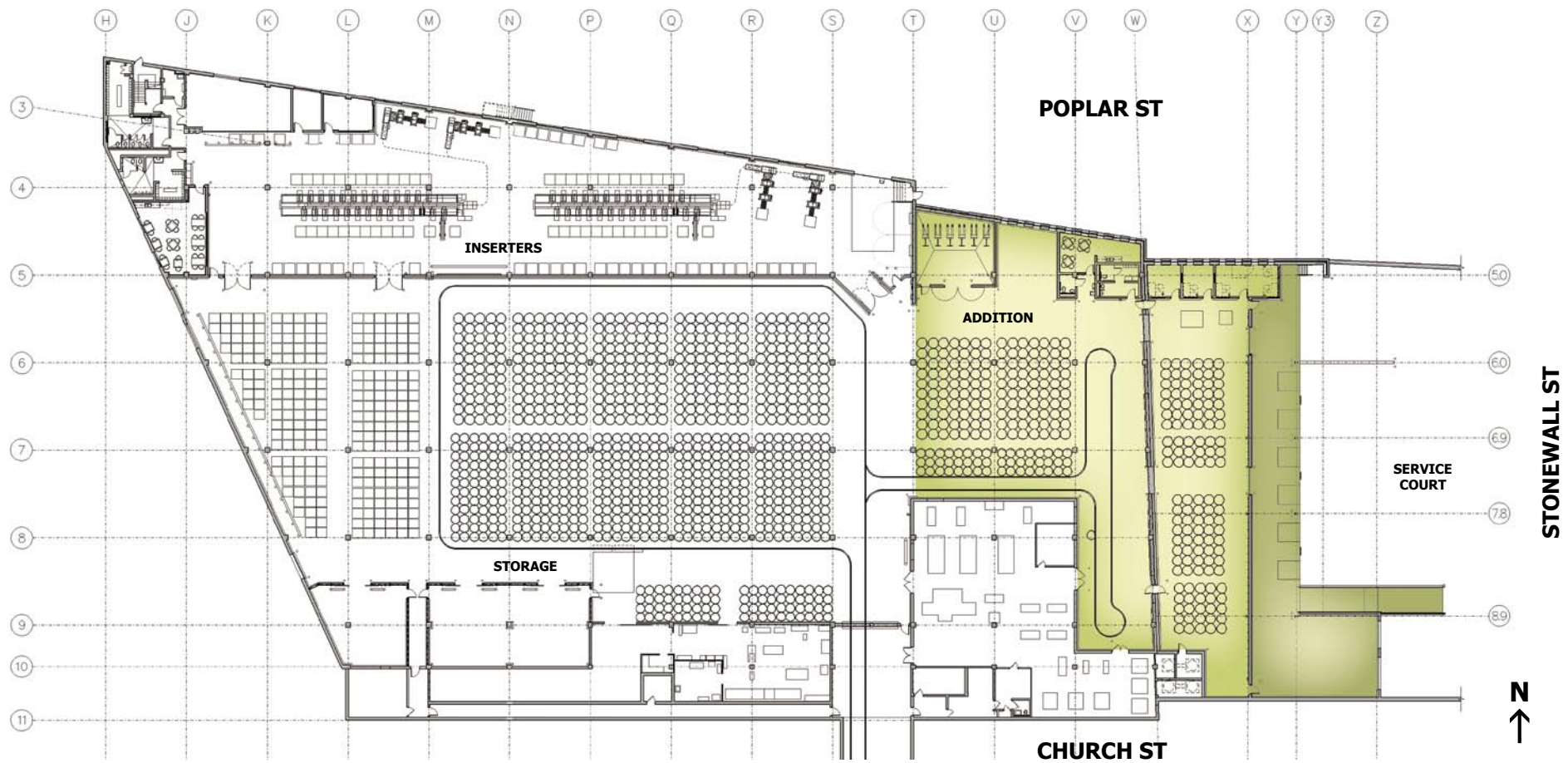
In 1998, The Charlotte Observer, located in the central business district of Charlotte, expanded its newspaper operations. Their goals were to construct a new addition to contain offices, break area, and additional storage and to renovate the existing paper storage area to house a large inserting machine. Another goal was to expand the loading dock area into a large service court capable of handling a fleet of tractor-trailer delivery trucks and facility recycling.

Because of its high degree of visibility from the Carolina Panthers stadium, the addition was designed with an articulated, engaging facade, achieved with various scales and colors of concrete masonry and a series of repeating metal sticks that give rhythm to the facade and textural difference.

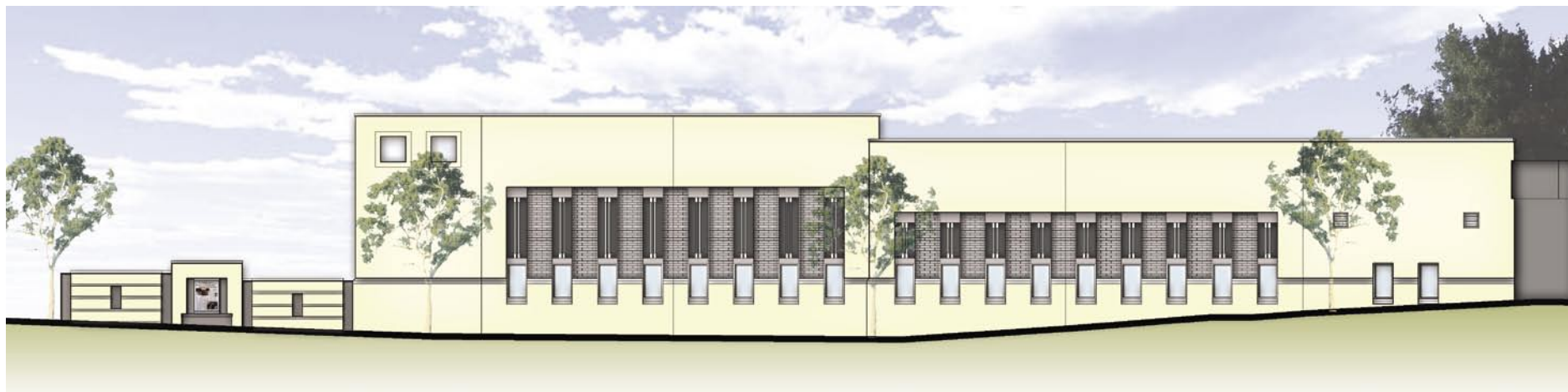
The service court was surrounded on three sides with a screen wall constructed of a masonry palette complementing the addition. The wall was punctuated with repeating masonry panels that contain backlit silk-screened images of historically significant Observer front pages. These serve to engage pedestrians and reinforce the Observer's identity and presence in the city.

70,000 SF (renovation)
13,000 SF (addition)
\$6.5 M

September 1998
The FWA Group



plan



[12] elevation from Poplar St.