



view from intersection of Elizabeth Ave. and Independence Blvd.



view from Independence Blvd.

MAJORS BOOKSTORE

**Central Piedmont
Community College
Charlotte, NC**

The brick and cast stone architectural vocabulary of this building sited on a prominent corner of CPCC's central campus is an expression of the redefined visual identity of the campus from 1960s modern to traditional, collegiate, and urban. Repeating pilasters at ground level, generous windows and the recessed corner entry allow the building to serve as a liaison between Central Piedmont and the historic Elizabeth neighborhood.

The campus bookstore, which also serves the neighborhood, occupies the ground floor of the facility. It shares the corner entrance lobby with the upper floors of the building, enabling users to easily find their way and simplifying security. The two upper levels are devoted to campus functions, providing general purpose classrooms, faculty offices, and a Small Business Education Center. A simple main corridor terminates at each end with natural light.

Several strategies toward sustainability were implemented. No new parking was added since the building can depend on access to public transportation and the student parking deck. High efficiency glazing and light-colored roofing minimize heat transfer. Bi-level switching, occupancy sensors, and reduced, but comfortable, lighting levels reduce lighting energy consumption.

45,000 SF
\$6.1 M

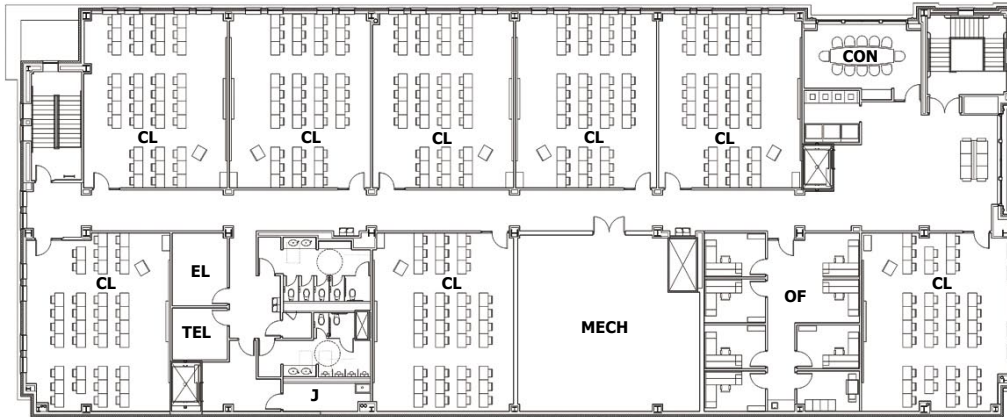
May 2004
The FWA Group



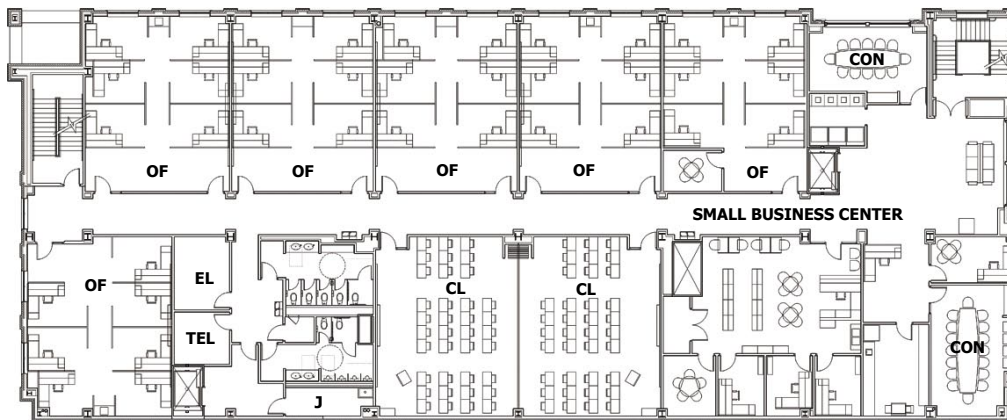
[14] building section at entry



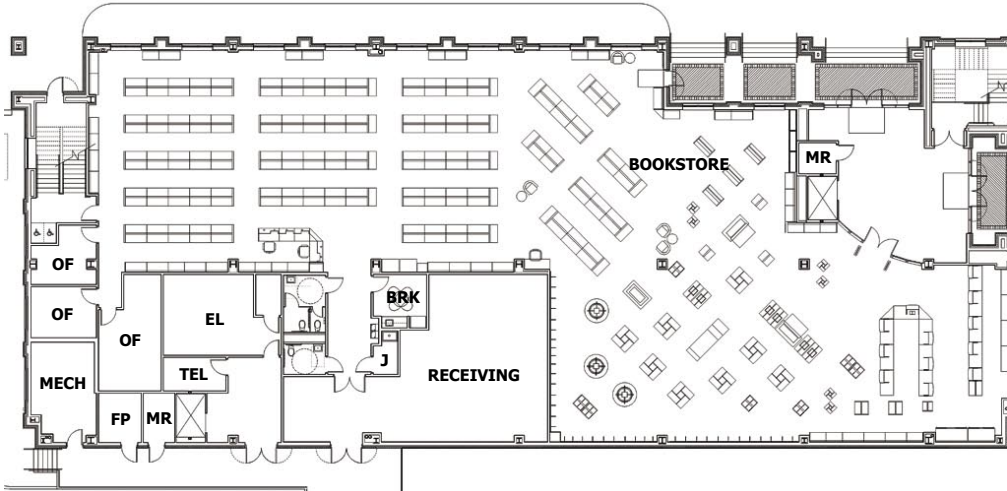
interior lobbies / bookstore



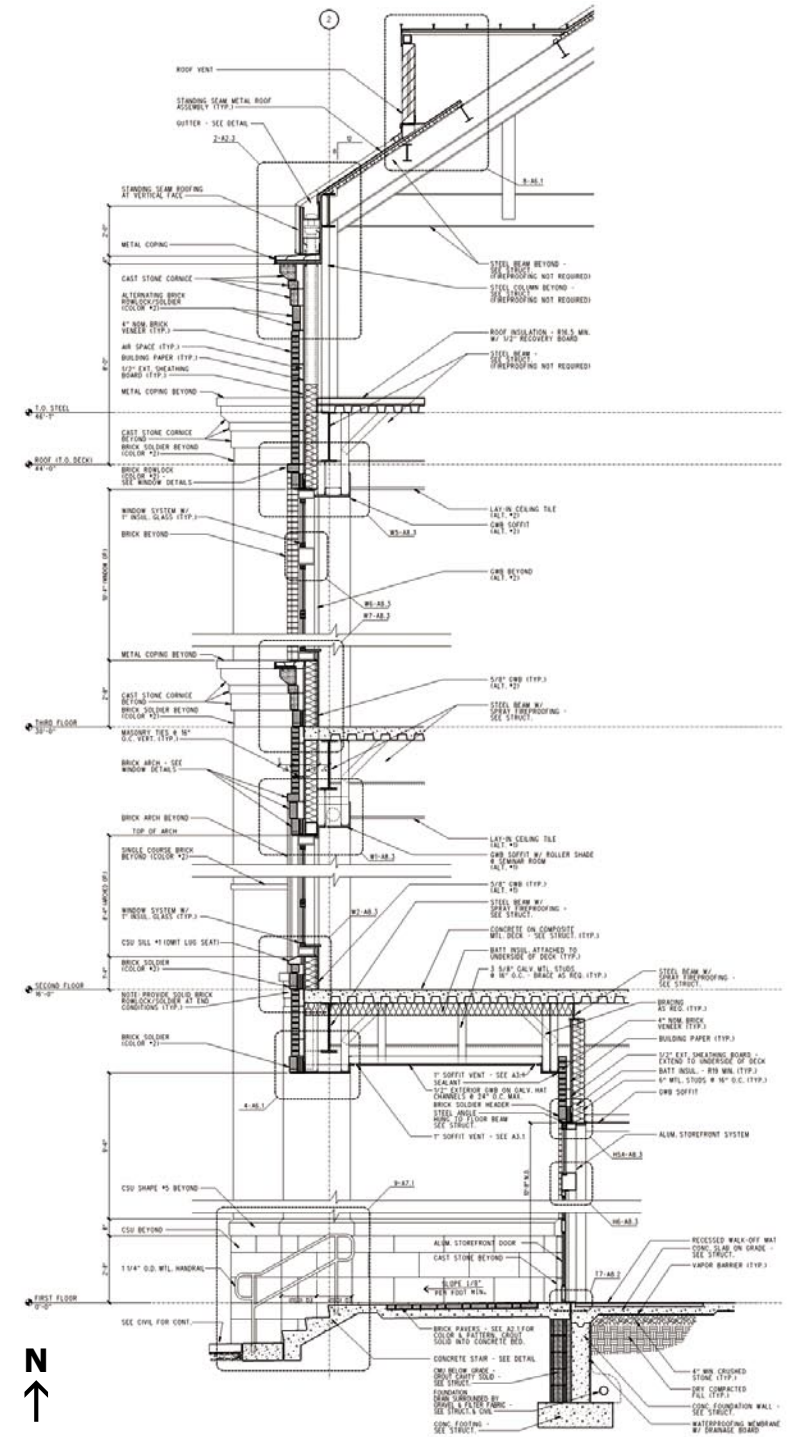
third floor plan



second floor plan



[16] first floor plan



wall section at entry



north elevation (Independence Blvd.)



east elevation (Elizabeth Ave.)



west elevation