



computer model / photo collage

BARD GRADUATE CENTER FOR STUDIES IN THE DECORATIVE ARTS

New York, NY

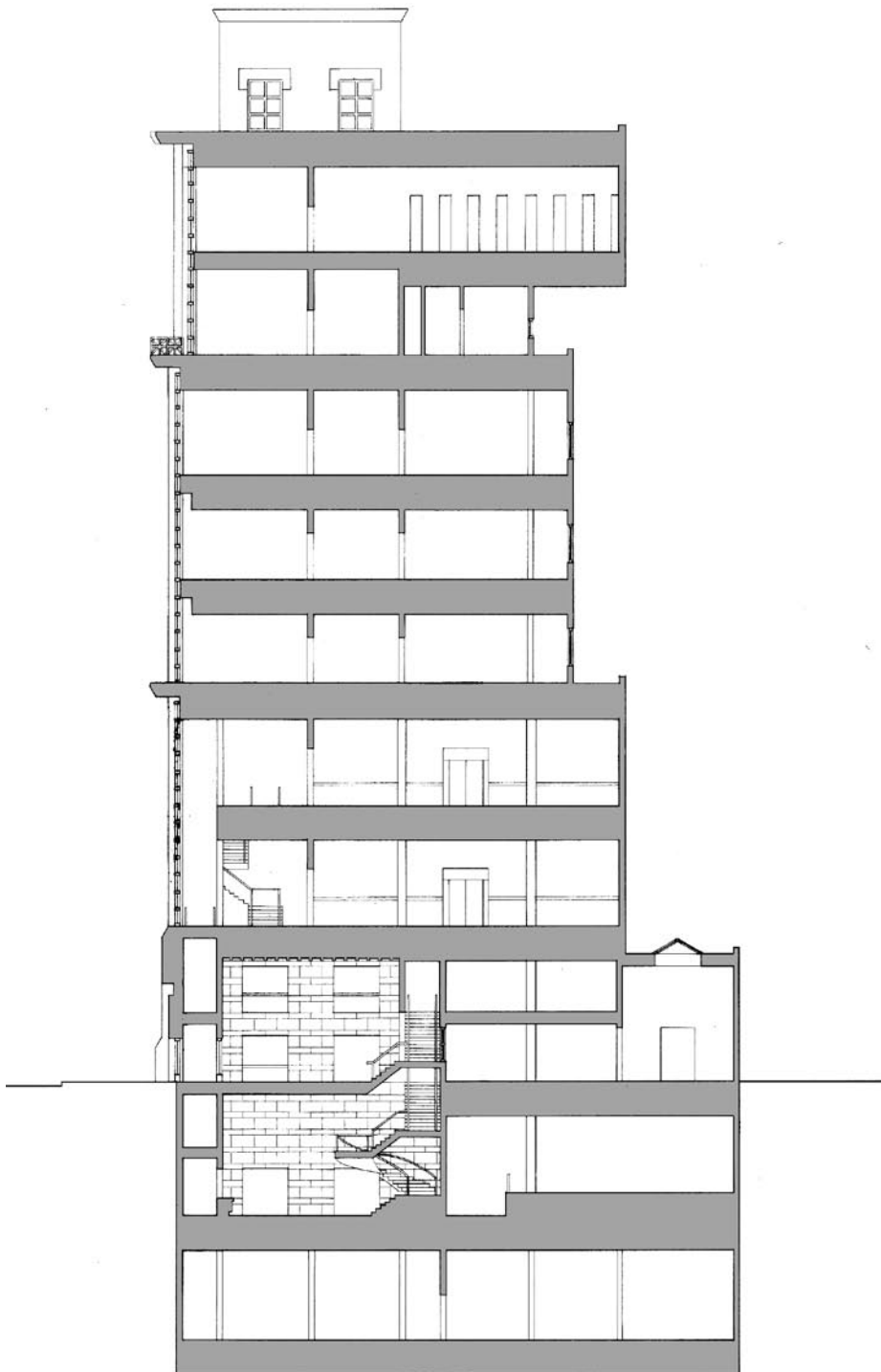
As a replacement for the existing Bard Graduate Center for Studies in the Decorative Arts, this project is a multi-use building located in Midtown Manhattan housing an educational institution with a museum component. The program calls for exhibition spaces, an auditorium, a library, seminar and classrooms, a conference room, a curatorial preparation area, faculty offices, a cafe/bookstore, visiting curator apartments, and service spaces. The strategy was to organize the program by placing the graduate school component above the public realm of the museum, each with its own circulation system, and by placing the service cores to either side, leaving the center clear for primary spaces.

The building takes advantage of northern light exposure and the views to the New York Public Library and Bryant Park across the street by offering ample glass. The exterior and primary spaces are constructed of ashlar stone, giving a degree of permanence to the young institution, and the facade is arranged in a tripartite organization which is contextual in the surrounding buildings. Window mullion spacing and other exterior detailing speak to the function of the institution as a center for decorative arts, and recall aspects of the Glasgow School of Art by Charles Mackintosh.



case study (Glasgow School of Art: Mackintosh)

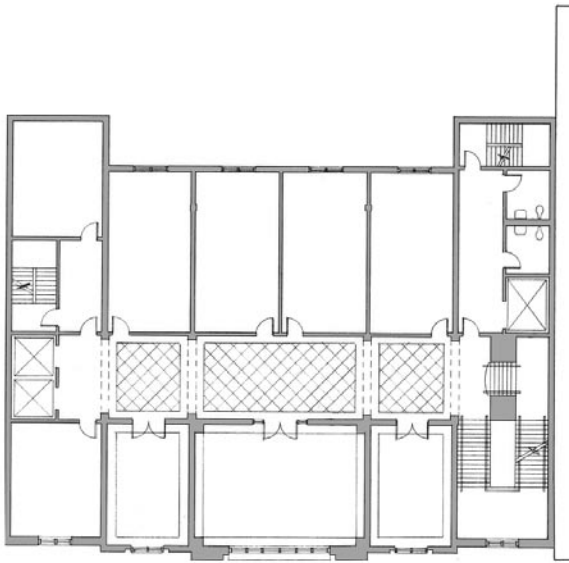
April 1996
Robert A. M. Stern, professor
Grant Marani, assistant professor
Columbia University



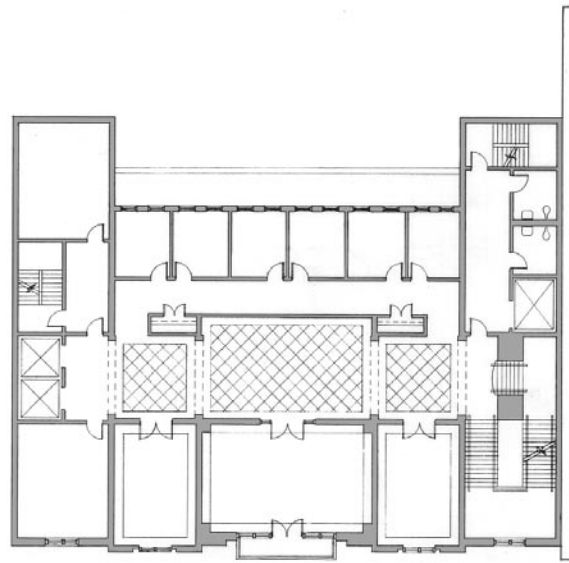
[8] building section



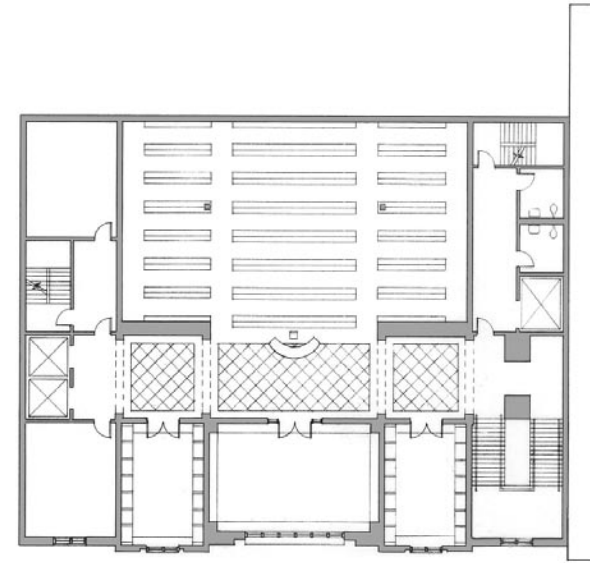
site model (chipboard)



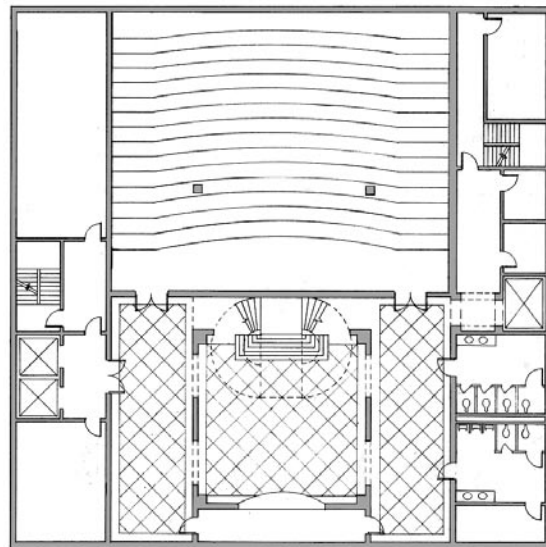
5TH | CLASSROOMS/STUDIOS



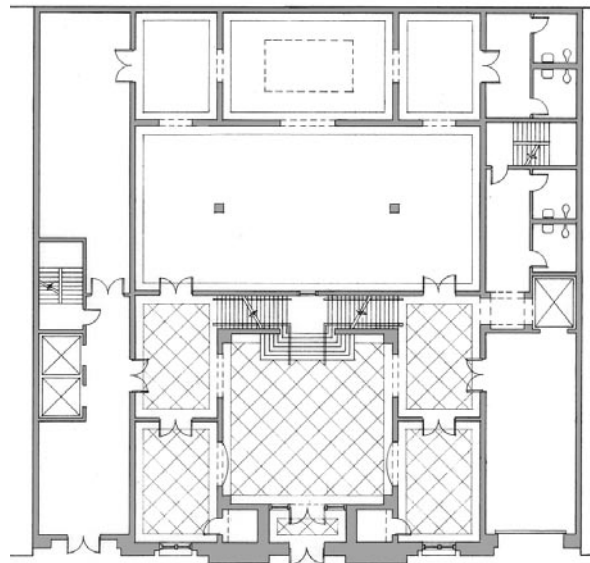
7TH | CLASSROOMS/OFFICES



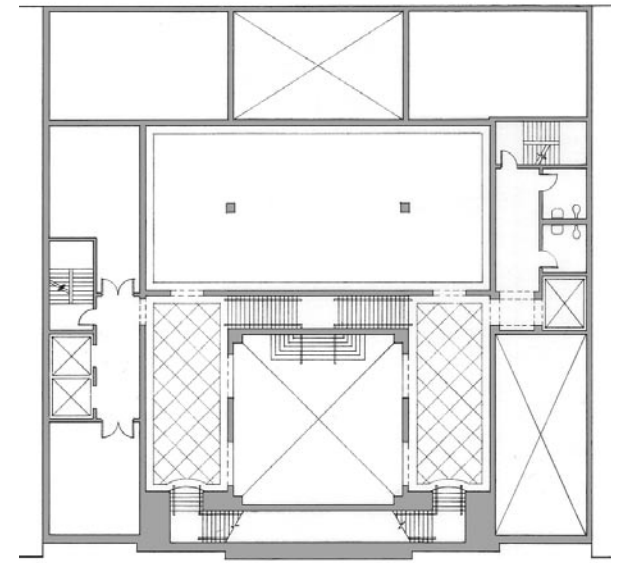
8TH | LIBRARY



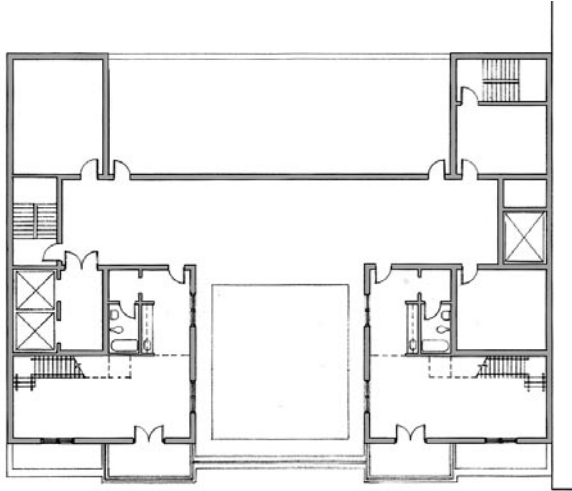
BASE | AUDITORIUM



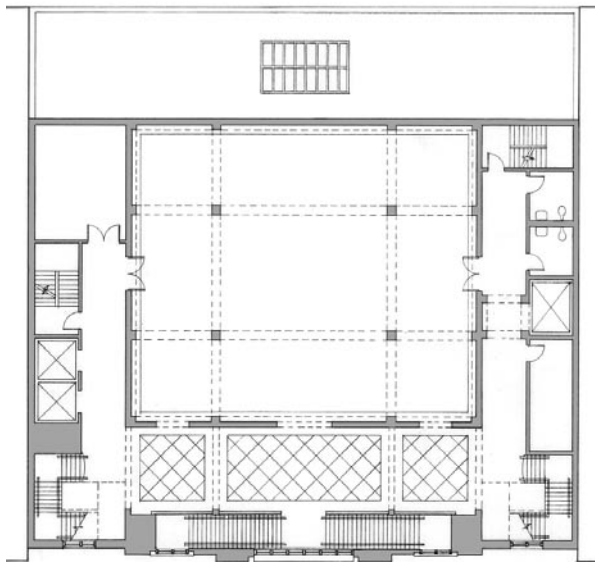
1ST | GALLERY



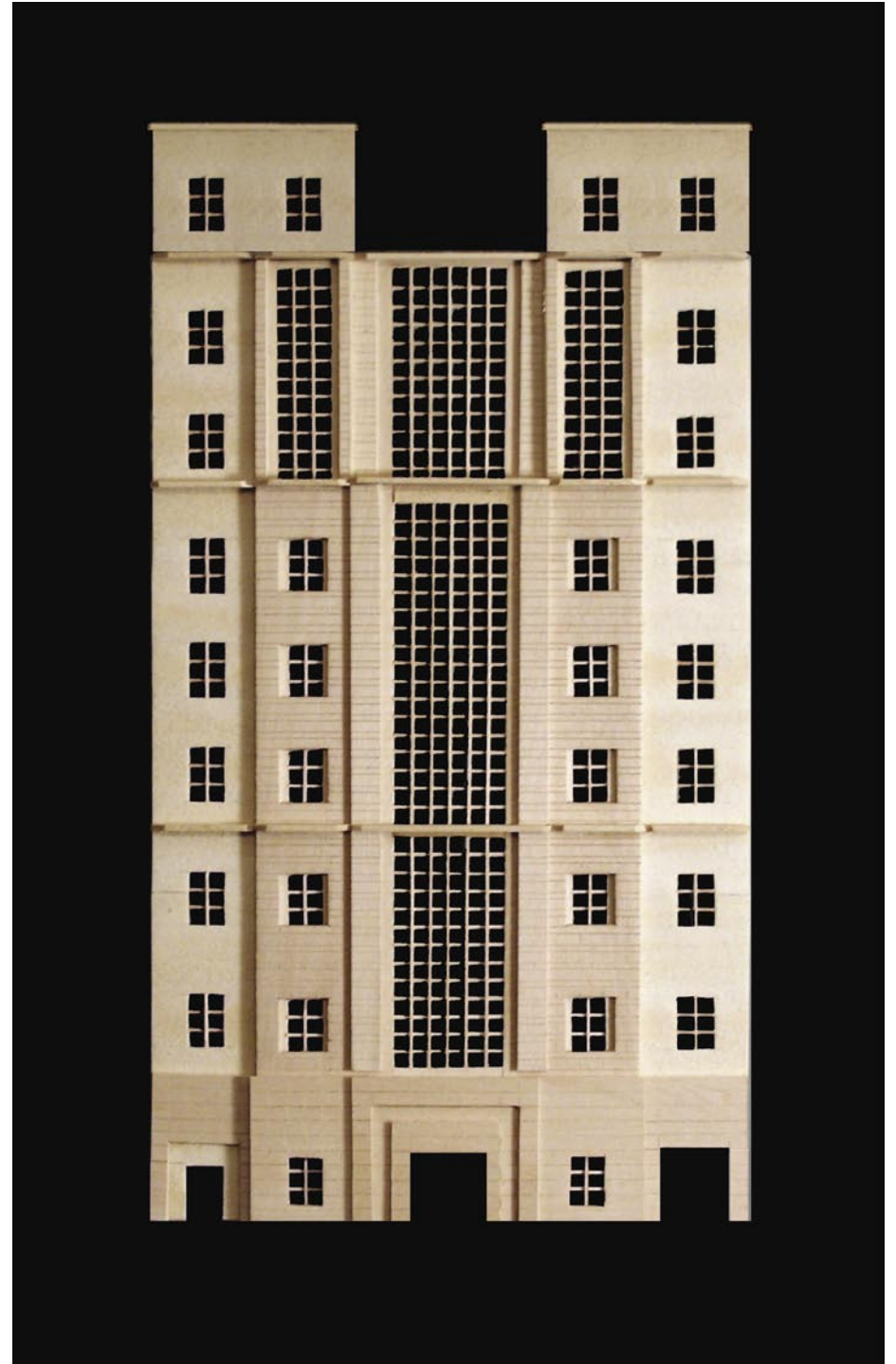
MEZZ | GALLERY



9TH | APARTMENTS



2ND | GALLERY



facade model (basswood)